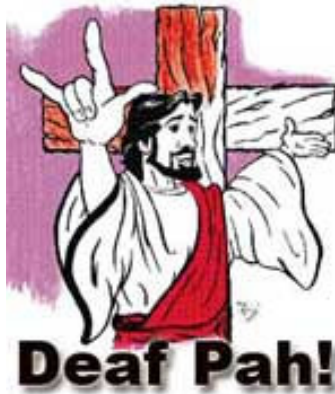


Worship Is . . .

Study Guide

(Taught by Rev. Darrel Kois)



Growing Together in Faith

Study Guide for

WORSHIP IS . . .

Book: *“Worship is Celebrating as Lutherans”* available from CPH, www.cph.org

Chapter One: *(Lesson 1)*

Answer the questions on page 5. Discuss your answers with your mentor.

Chapter Two: *(Lesson 4)*

Answer the questions on pages 14 & 15. Discuss your answers with your mentor.

Chapter Three: *(Lesson 5, 6 & 7)*

Answer the questions on page 23. Discuss your answers with your mentor.

Chapter Four: *(Lesson 8, 9, 10, 11, 12, & 13)*

Answer the questions on page 35. Discuss your answers with your mentor.

Chapter Five: *(Lesson 14 & 15)*

Answer the questions on page 45. Discuss your answers with your mentor.

Chapter Six: *(Lesson 15)*

Discuss with your mentor the differences between “propers” and “ordinaries.”
Answer the questions on page 54. Discuss your answers with your mentor.

Chapter Seven:

Answer question #4 on page 59. Discuss your answers with your mentor.

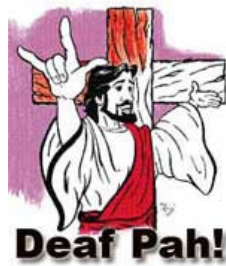
[The book “Where We Worship” is to be used as a reference tool only.]

FINAL EXAM FOR WORSHIP IS . . .

Please do this online or on a separate piece of paper.

1. Worship liturgy is often people's idea of our only responsibility and right before God.
 - a. What are the important Christian rights and responsibilities included in our liturgy and worship?
 - b. What are some other Christian rights and responsibilities not included in our Sunday morning worship? Example: we can pray at home.

2. From three churches in your area (any denomination):
 - a. Explain what kind of architecture you believe they have.
 - How does the architecture show God's beauty and love for your community?
 - How does the architecture not show God's beauty and love for your community?
 - b. Explain what kind of furnishings they use, i.e., baptismal font, altar and pulpit.
 - How do the furnishings show God's beauty and love for members worshiping in their churches?
 - How does it not show God's beauty and love for members worshiping in their churches?



Produced by:

Deaf Lutheran Missions
PO Box 1795
Janesville, WI 53547

Deaf_Jesus@yahoo.com